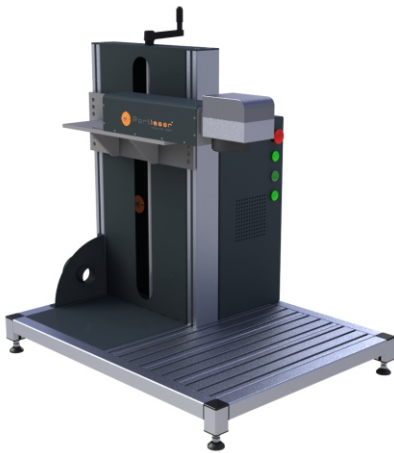




Portlaser[®]
Industrial Laser

PTL FIBER MARK BASIC



Workstation Fiber Laser for Marking /Engraving of Metals and Plastics.

MAIN FEATURES:

- Ytterbium fiber laser of 20W to 70W power and MTBF above 100,000 hours
- Working areas of 70mmx70mm to 300x300mm (Depending on the optical configuration)
- Air cooling
- Manual or Electric Z axis
- Economic and compact system

APPLICATIONS



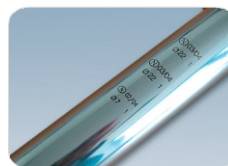
Automotive Industry Component



Keypad



Silver Cutting



Metal (cylindrical parts)



Cutlery

www.portlaser.com

All information and values listed are subject to change without notice.

Rua Padre Joaquim Firmino Gomes, n° 981 - 4755-413 Pousa, Barcelos - Portugal
Tel. (+351) 253 917 118 - Fax (+351) 253 917 120 - Email: geral@portlaser.com

LaserMarking LaserWelding LaserCutting



PTL FIBER MARK BASIC

TECHNICAL SPECIFICATIONS

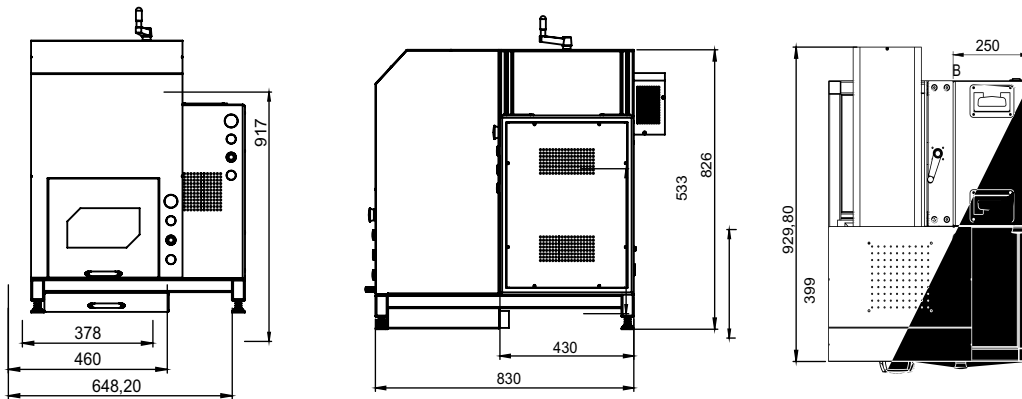
MODEL:

PTL FIBER MARK BASIC

Laser Power:	20W to 70W
Laser Type:	Ytterbium fiber laser
Marking area (mm):	up to 300X300mm
Wavelength:	1.064 nm
Maximum engraving speed:	>7000 mm/s.
MTBM:	+100.000 hours.
Preview:	Diodos laser 650 nm 2mW
Standard Laser Safety:	CLASSE 4 Laser system, CEI EN 60825-1
Power Supply:	220-240V AC 50Hz.
Electric consumption:	500-750W.
Cooling System:	Air cooled.

INTERFACE

Control:	Cad software in Windows Environment.
File Format:	PLT, DXF, BMP, PCX, TIFF, JPEG, GIF MCL, etc.



OPTIONS



Fume Extraction System (With Filters)



Fume Extraction System (Without Filters)



Rotary Attachment

www.portlaser.com